



Submersible pump OWNER'S MANUAL

INTRODUCTION

Jebao's pumps are carefully inspected and tested to ensure both safety and operating performance. However, failure to follow the instructions and warnings in this manual may result in pump's damage and/or serious injury. Be sure to read and save this manual for future reference.

Zhongshan Jebao Electronical & Electrical Appliance Co., Ltd.
Tongmao Industrial Park, Dongsheng,
Zhongshan, Guangdong, China.
Email: info@jebao.com
Website: www.jebao.com
Tel: +86-760-22212306, 22212307
Fax: +86-760-22212368

For X numerical value, pls see the items of below form

Models Form:

Models	V-Hz	Power	Depth: minx	Characteristic
PF-750	220-240V 50Hz	11W	0.05m	
PF-1000	220-240V 50Hz	14W	0.05m	
PF-2000	220-240V 50Hz	35W	0.2m	
PF-3500	220-240V 50Hz	52W	0.2m	
PF-4000	220-240V 50Hz	75W	1m	
PF-3000	220-240V 50Hz	60W	1m	
PF-4200	220-240V 50Hz	70W	1m	
PF-5000	220-240V 50Hz	98W	1m	

Remark:

For outdoor use. The pump is to be supplied through a residual current device (RCD) with a rated residual operating current not exceeding 30mA.

All the models the maximum operation depth is 1.5m.

WARNING

- Do not connect to any voltage other than that shown on the rating label of the pump.
- Do not pump flammable liquids. The appliance is only intended to be used in aquarium.
- The maximum operation depth is 1.5m.
- Do not use with water above 35°C.
- The supply cord cannot be replaced. If the cord is damaged the appliance should be scrapped.
- The pump is not intended for use by young children or infirm persons without supervision.
- The maximum total head is 2.8m (for 3000 and 4200 series); 2.9m (for 4000 series); 3.6m (for 5000 series)
- To protect against the risk of electrical shock, do not immerse the plug in water or other liquid.
- This appliance is not intended for use by persons (including children) with reduced physical, sensory or mental capabilities, or lack of experience and knowledge, unless they have been given supervision or instruction concerning use of the appliance by a person responsible for their safety.
- Children should be supervised to ensure that they do not play with the appliance.

CAUTION

Always disconnect from electrical outlet before cleaning, maintenance and handling the pump.

Don't operate without water.

Do not lift the pump by holding the power cord.

Do not use the pump in liquids having a temperature exceeding 35°C. Use the pump only in freshwater.

Please use the pump only when it is completely submerged in water.

Must not use the pump in swimming pool.

PERFORMANCE

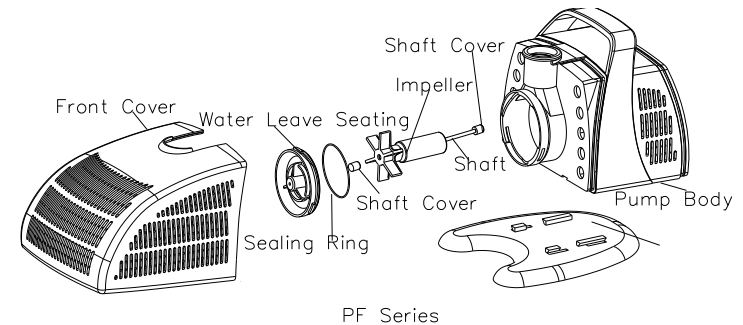
A clogged or dirty intake screen will greatly reduce performance.

If the pump is used on a dirty surface, raise it slightly to reduce the amount of debris contacting the intake. If less flow is desired, adjust the regulator on the sealing cover to restrict the flow.

Do not let the pump run when not submerged in water. That may damage

the pump. Always submerge the pump first, and then plug in the electrical outlet. At the beginning, it probably can't pump water, because there is air in the pump and the tube. Don't worry about it. Please pull out and insert electrical outlet several times, it will work normally.

INSTALLATION DRAWIN



MAINTENANCE

Unplug before cleaning.

To clean the pump, remove the back cover, sealing cover and the impeller.

Use a small brush or stream of water to remove any debris

CAUTION: The pump shaft can not be removed.

If the pump fails to operate, check the following:

- Check the outlet and try another outlet to ensure the pump is getting electrical power.

NOTE: Always disconnect from electrical outlet before handling the pump.

- Check the pump outlet and tubing for kinks and obstructions. Algae may block them, please flush out the algae with a garden hose.
- Check the inlet to ensure it is not clogged with debris.
- Remove the pump inlet to access the impeller area. Turn the rotor to ensure it is not broken or jammed.
- Monthly maintenance will prolong your pump's life.

NOTE: Ensure that the electrical cord loops below the electrical outlet to form a "Drip Loop". This will prevent water from running down the cord into the electrical outlet.



DISPOSAL: Do not dispose this product as unsorted municipal waste. Collection of such waste separately for special treatment is necessary.